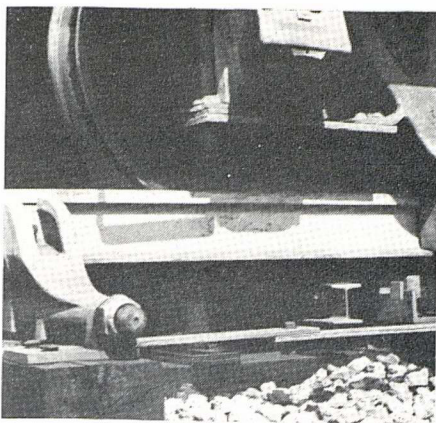


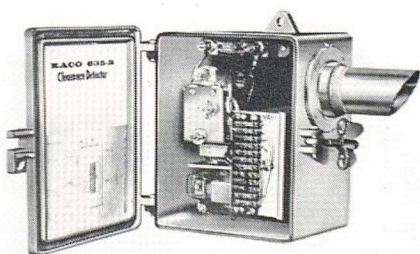
PRODUCT NEWS



Retarder Control

RSC-1

With the "on-off" feature added to the model 40 inert car retarder, cars can be removed from the retarder without wear on brake shoe rails. This new development permits opening the retarder when no retardation is required to allow locomotives, or trains, to pass through the retarder without any retardation. If it is desired, cars can be stopped on grade by the retarder, and with the "on-off" feature the retarder can be opened to permit a car, or cars, to be released to travel by gravity to their selected destination. Essentially this new apparatus consists of an electrically driven hydraulic pump, a solenoid control valve, and hydraulically operated rams which lift the running rail to the "off" position. *Union Switch & Signal.*



Clearance Detector

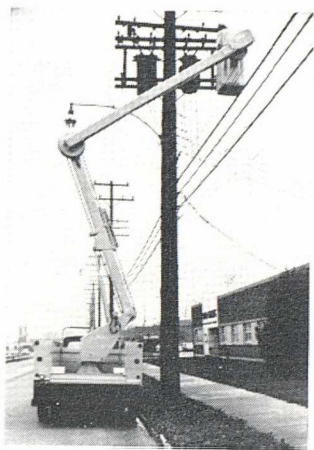
RSC-2

A reflex system of optics (split beam principle) operating from 115 volts 60 cps and consuming about 100 watts responds to 1" diameter vertical obstructions at speeds up to 60 mph. The unit is independent of wind sway, because all of the electrical equipment is mounted on one side of the beam, and only a retrodirective reflector is needed on the opposite side.

The reflector may be placed up to 75 ft away in clear weather. Where the reflector is backed by brightness (such as sky), it must be mounted on a 2 ft

x 2 ft panel to obscure that part of the brightness which is directly in line with the reflector.

The unit can be arranged for manual testing by remote pushbutton; for manual resetting, also remotely. Non-operation due to smoke, fog, lamp burnout, etc. provides an alarm which cannot be reset; hence, indicates "out-of-service". The unit can be tied into the track relay for occupancy; or a Raco magnetic detector and timing unit can be used to trigger it. *Railroad Accessories Corp.*



One-Man Elbow

RSC-3

A new single-bucket 41' elbow with 110-deg lower arm, 270-deg upper arm travel is the LD-41, which can be operated by one man. With both arms horizontally extended, the LD-41 has a maximum reach of 28' 7" from the centerline of the pedestal to the outer edge of the bucket. It reaches 11' below ground level and can be positioned at ground level for access or tool loading from front, rear or either side. The LD-41 rotates 400 deg in either direction. It swings 360 deg in 60 seconds; the lower arm elevates through 110 deg in 80 seconds; and the upper arm moves through 270 deg in 160 seconds.

The upper arm is fabricated principally of high dielectric fiber glass reinforced plastic and provides 116" of bucket-to-ground insulation at 8,000 volts/inch dry flashover. All arms are factory tested to withstand 100 kv (DC) for one minute and the straight-sided molded fiber glass reinforced plastic bucket (24"x24"x38") is immersion proof tested to withstand 100 kv (DC) for one minute.

The bucket is leveled in all positions with an enclosed mechanical parallelogram linkage. The LD-41 is equipped with high pressure series-

(Please turn to page 52)